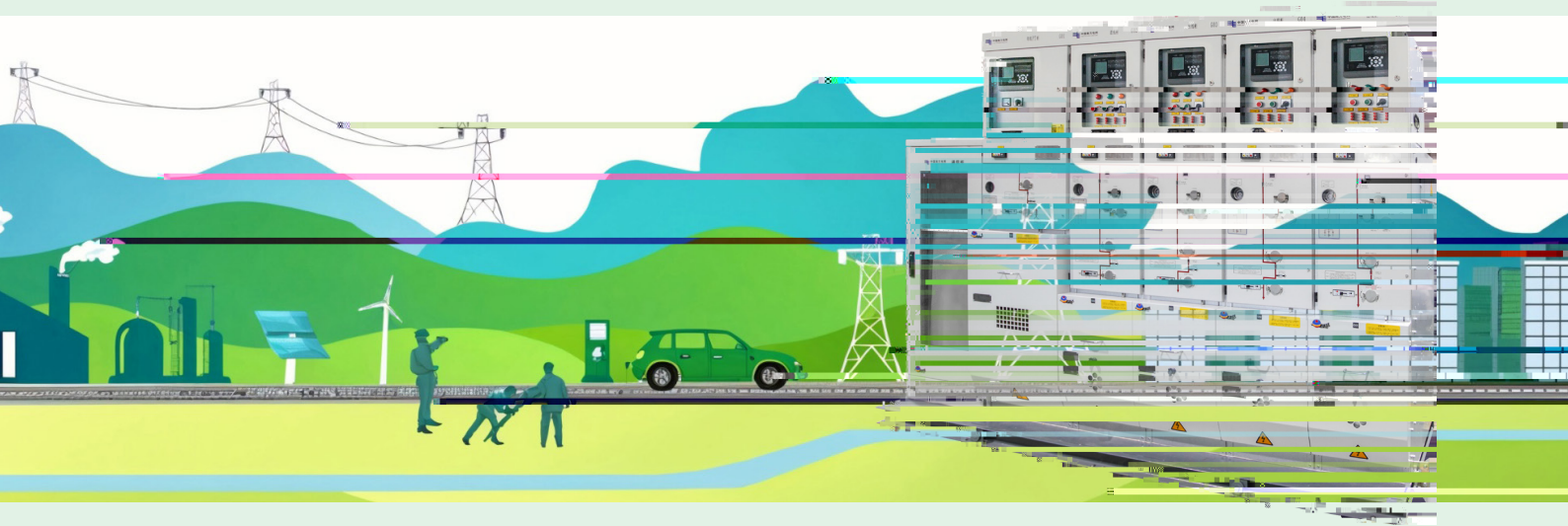




12kV

SF6 Gas / Dry Air Insulated Ring Main Unit



Product description

The ZCSF-12/ZCKQG-12 RMU is suitable for power system in the three-phase 50 Hz with the rated voltage of 3.6 to 12 kV. It is mainly used in industrial and civil cable ring networks and power supply terminals. The product is compatible with vacuum circuit breakers, SF₆ load break switches, and load switch/fuse combination units. It is adaptable to indoor environments with altitude up to 4,000m.

Working environment

Environmental temperature: -40°C (min) to 65°C (max)

Altitude: no more than 4,500 meter

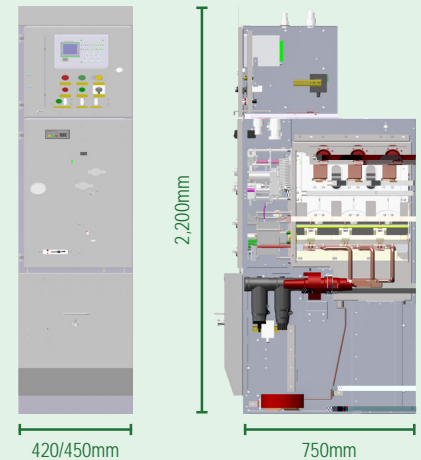
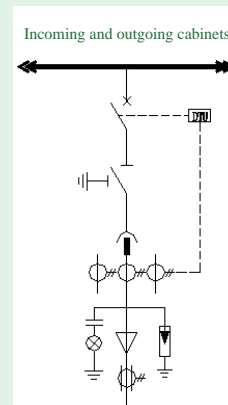
Ambient humidity: daily average 95%, monthly average 90%

Atmospheric environment: no fire, explosion hazard, serious pollution, chemical corrosion

Seismic intensity: 8

GB/T 3906: Alternating-current metal-enclosed switchgear and controlgear for rated voltages above 3.6kV and up to and including 40.5 kV

IEC 62271-200: High-voltage switchgear and controlgear - Part 200: AC metal-enclosed switchgear and controlgear for rated voltages above 1 kV and up to and including 52 kV



Electrical features

Temperature-rise tests on 1.1 times of rated current, 10K below IEC limits

Cable and switching compartments pass 25kA/1s internal Arc tests

Adaptable to altitude of up to 4,000m

Durable: circuit breaker with electrical endurance of 30 operations, E2 class earthing switch (5 times)

Mechanical endurance: circuit breaker and earthing switch mechanically type tested for 10,000 and 5,000 operations respectively

Automation and remote control available for both disconnecter and load switch

Industrial cameras can be installed to monitor gas boxes operation, video footages can be stored and shared

Technical features